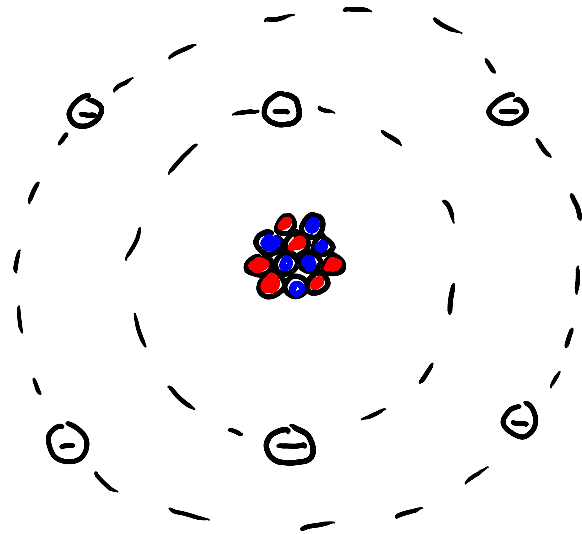


Elära - grunder

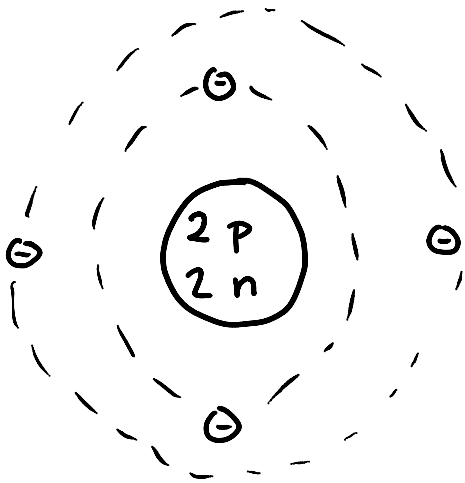
En atom



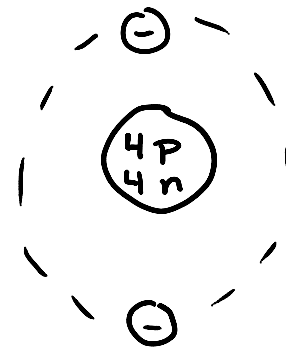
● = neutroner
oladdade

● = protoner
plusladdade

⊖ = elektroner
minussladdade

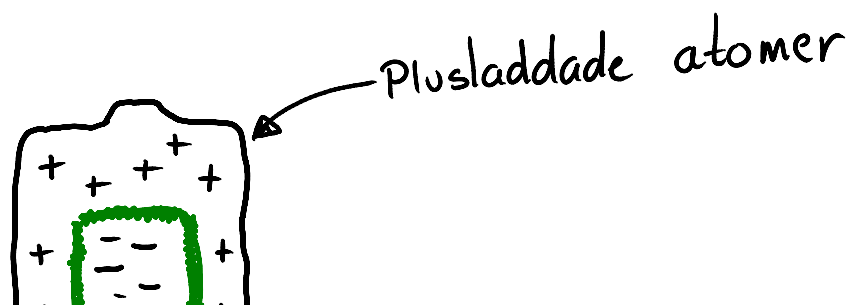


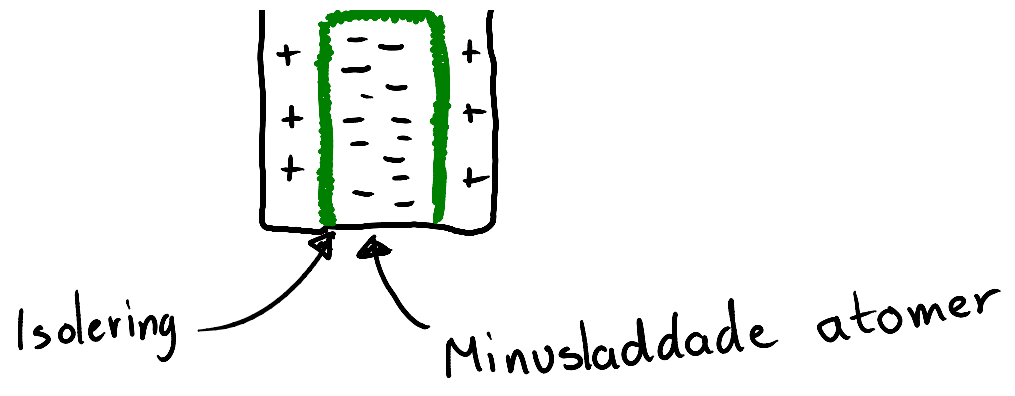
Totalladdning = -2



Totalladdning = +2

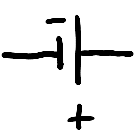
Etll batteri ↓






Olika komponenter i en elektrisk krets

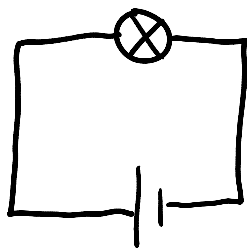
— = ledare/sladd

 = batteri

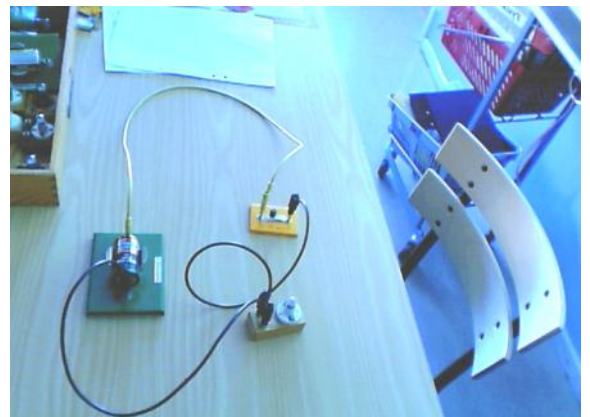
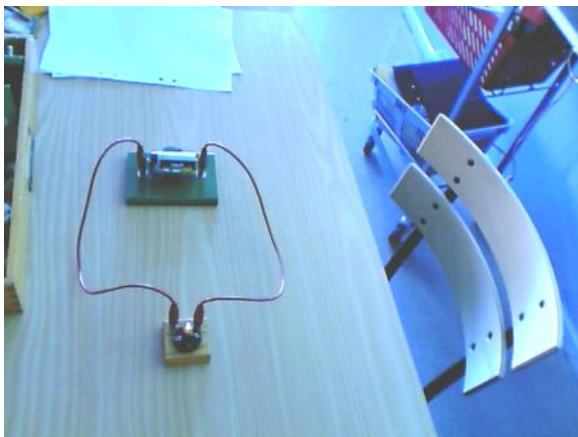
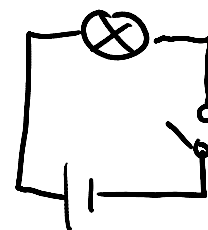
 = strömbrytare

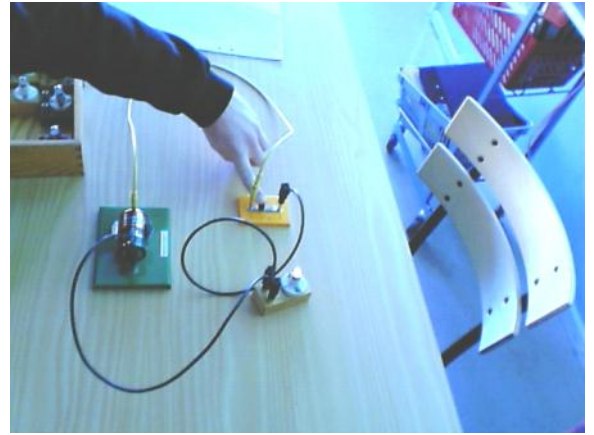
 = lampa

①

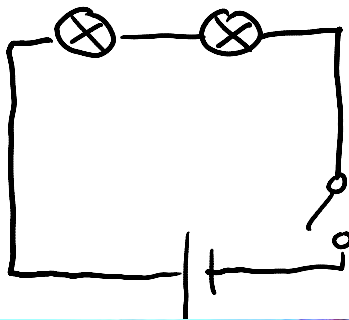


②

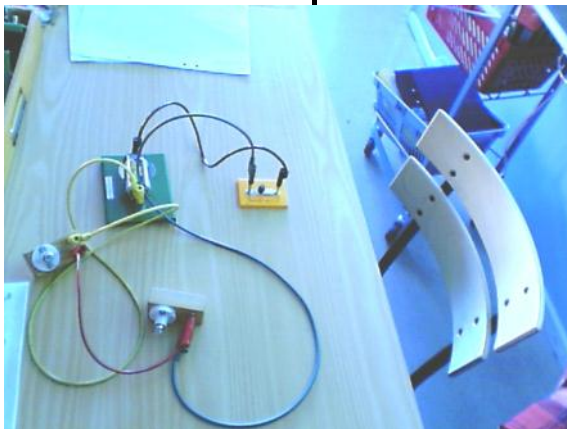
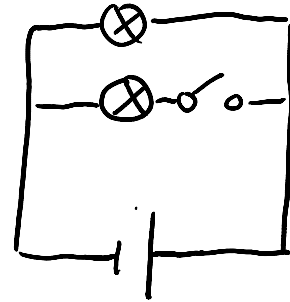




③

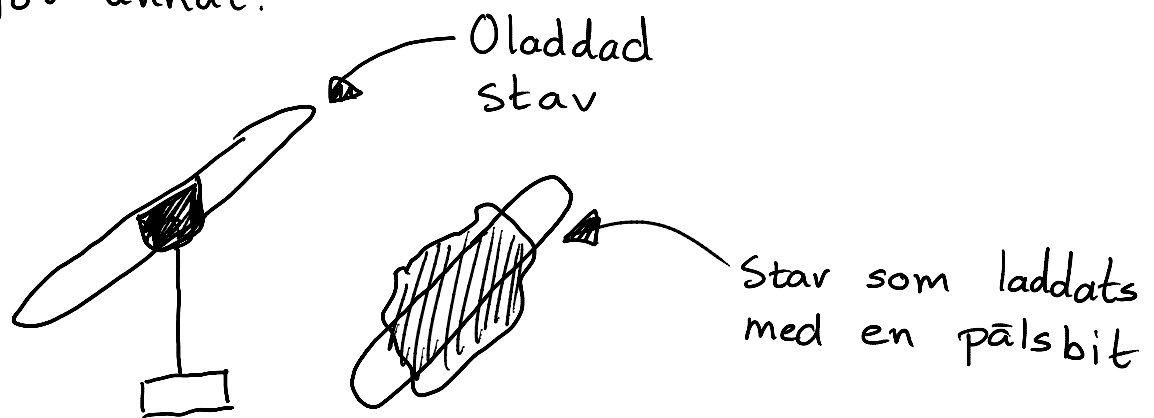


④



Gnidningselektricitet eller Statisk elektricitet.

- Ett oladdat föremål d.v.s en sak med lika många elektroner som protoner kan laddas genom att den saken gnids mot något annat.



Staven blir negativt laddad för att elektroner hoppar från pälsen till staven.

- Åska

